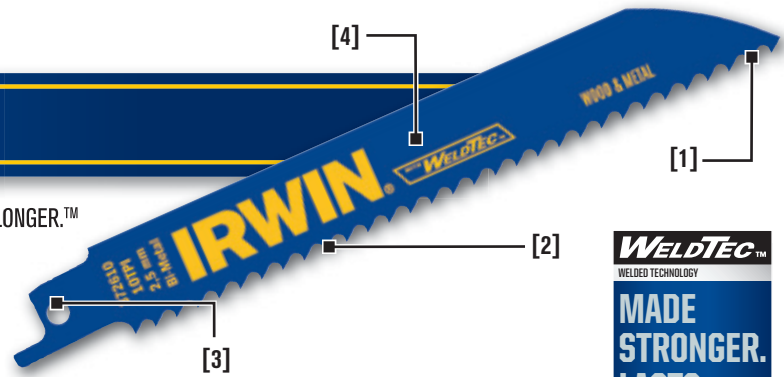


BI-METAL RECIPROCATATING SAW BLADE FEATURES

1. Patented WeldTec™ tooth design — MADE STRONGER. LASTS LONGER.™
2. High-speed steel cutting edge with 8% cobalt stays sharper, lasts longer
3. Increased tang angle for optimal speed and cutting performance
4. Heavy-duty Bi-Metal construction extends life, increases durability, and prevents breakage



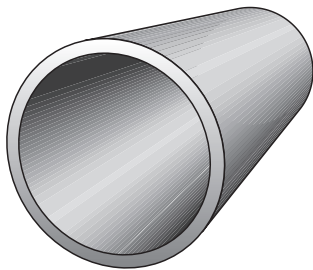
Teeth Per Inch Selection Guide

3 TPI	6 TPI	8 TPI	10 TPI	10/14 TPI	14 TPI	18 TPI	24 TPI	GRIT
ROUGH			CUT QUALITY				SMOOTH	
FAST			CUT SPEED				SLOW	
Wood								
			Thick Metal 1-8" - 1/2"					
					Medium Metal 3/32" - 5/16"			
						Thin Metal 1/8" and Less		
								Abrasives

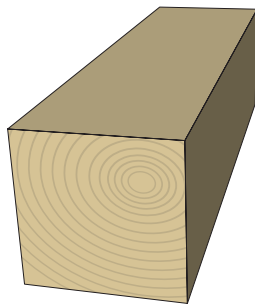
LINEAR EDGE

Blade Length Selection Guide

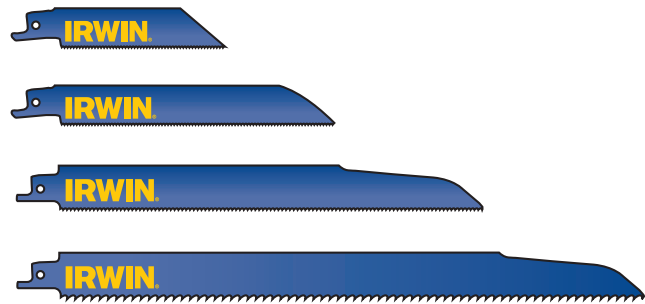
For best results, use a TPI that yields 2-3 teeth in the material at all times.



Width



Width



Width of Material + 3" = Blade Length